



# WELCOME

## Yankee Girl Remediation Thoughts . . .

Risk . . . Assessment

































**No vegetation.**

**Toxic odors.**

**Heavy contamination.**

**Eerily unnatural.**

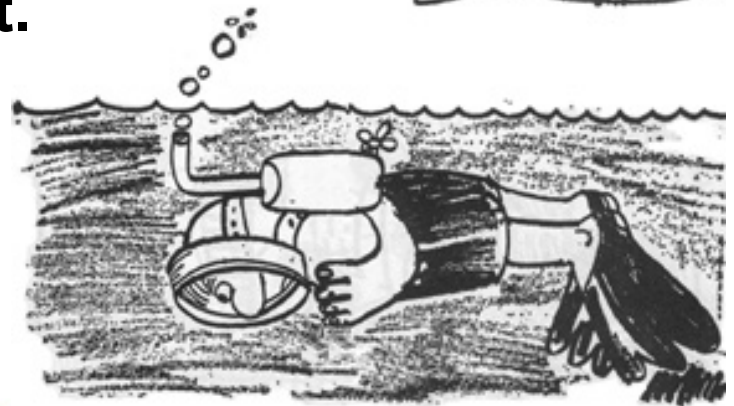
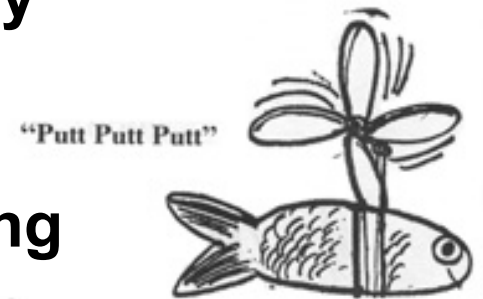


# PROJECT HISTORY

**1998, SWSS, partners and volunteers  
activate a bull trout radio telemetry  
project..**

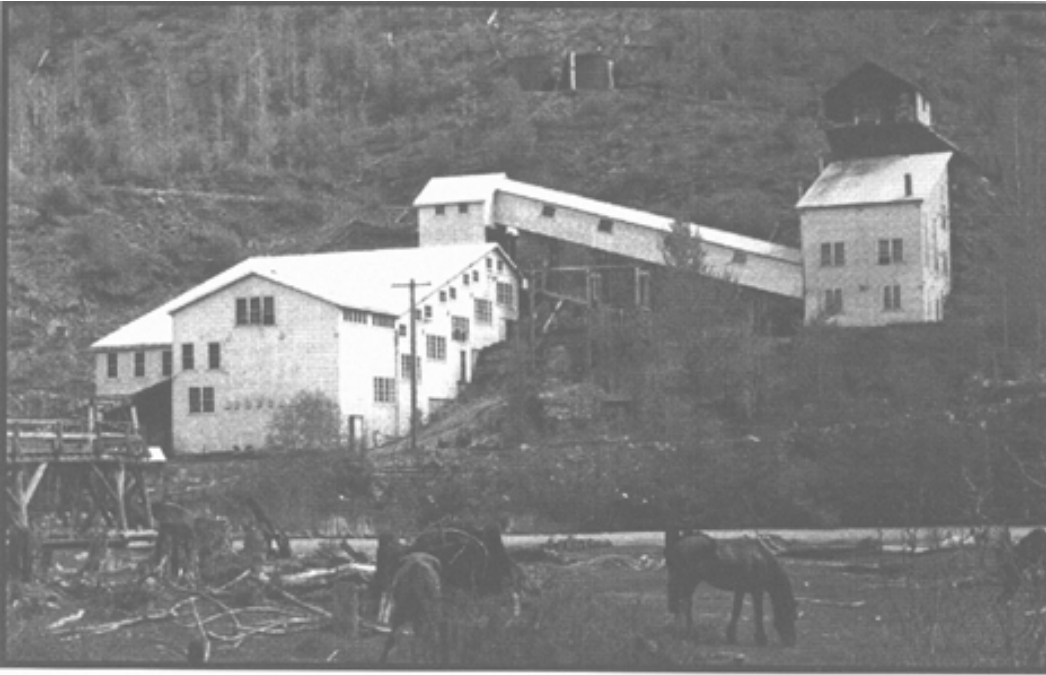
**Aerial tracked to determine spawning  
and over-wintering habitat.**

**Also GPS tailings sites**





# PROJECT HISTORY



The Yankee Girl Mill site across the river from Ymir in 1934.

June 2000 to ... SWSS conducts 14 tours to bring awareness of YG Tailings.

Sept. 2000: SWSS activates/helps with Ministry sampling.

Nov. 2000: SWSS publishes the "Inventory of Mine Tailings and Ponds in the Salmo Watershed" 38pg + App.

SWSS/Community activates Coconut Telegraph.

Nov. 2001: SWSS activates/helps with additional Ministry sampling

Jan. 28, 2002: "Yankee Girl Restoration Outline" Letter to property owners on the Salmo River mainstem.

Oct. 2002: YG Remediation "Restore Cyanide Flats?" News article - SVN.

Mar. 13, 2003: 1st YG Public mtg. SWSS and WLAP (Robyn Roomes' Report) - 115 people attend.





Mar. 18, 2003: MSRM memorandum to Kathy Eichenberger – communication ... “via the Salmo Streamkeepers Society”

\*\*May 14, 2003: DFO issues Directive to Province to “include options for site stabilization and evaluation of pros and cons associated with possible options.”

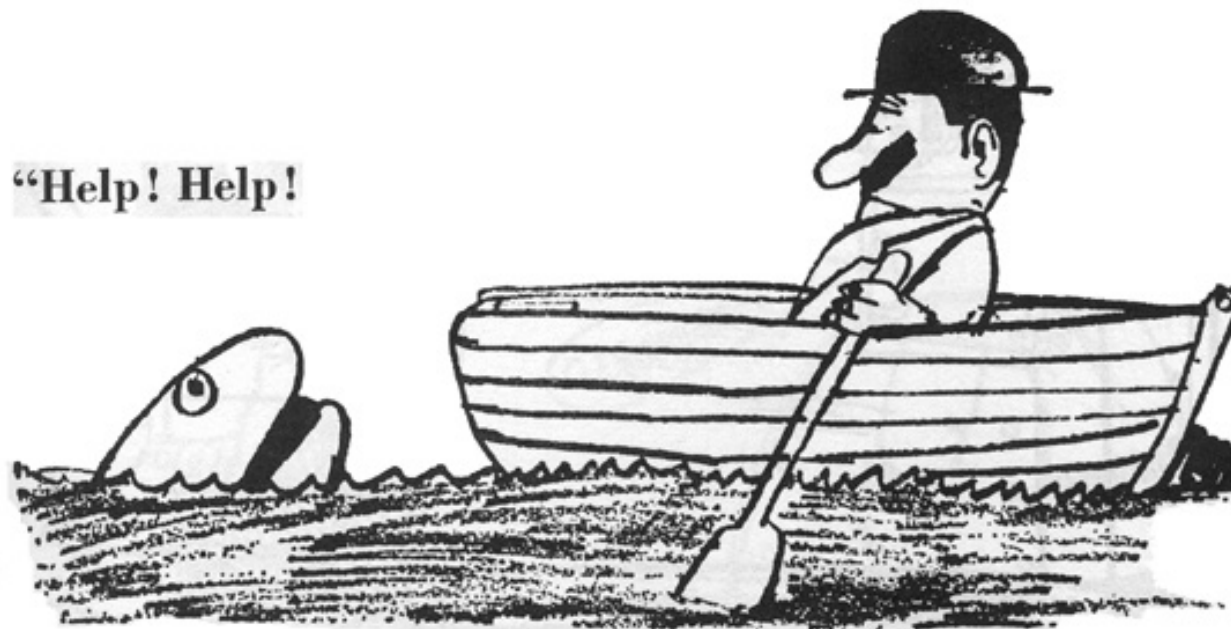
June 17, 2003: 5 core samples taken SWSS/Bill Duncan. Shows lower tailings to contain more toxins and some gold.

Nov. 21, 2003: Yankee Girl Restoration Fundraiser Dance. (Fun\_raiser) YG Tailing's remediation options revolving powerpoint presentation.

Whole time to present: Numerous Kitchen Table mtg's. and coffee babble mtg's take place.



**The Environmental  
Impact Assessment  
Report revealed a host  
of contaminants.**





“In terms of human exposure...  
YG tailings... pose a risk to  
humans through inhalation and  
dermal (skin) exposure to  
contaminants.” (p. 6)

- **“Elevated levels of arsenic, cadmium, lead, silver and zinc concentrations exceeding... standards of the Contaminated Site Regulation.”**
- **“Cadmium/lead... demonstrated to have a high leachate potential.”**
- **Comparison to leachate quality standards of the Special Waste Regulation...qualify as special waste.”**
- **“The elevated concentration of arsenic in the soil also qualifies the residues as special waste.”**

**Yankee Girl Tailings  
Environmental Impact Assessment  
Summary Report**

**November 2002**



Ministry of Water, Land and Air Protection  
401 – 333 Victoria St.  
Nelson, BC  
V1L 4K3



- **“This ... information indicates a potential for the Yankee Girl tailings to impact the aquatic ecosystem of the Salmo River, downstream water users, recreational users of the site and the community of Ymir.”**

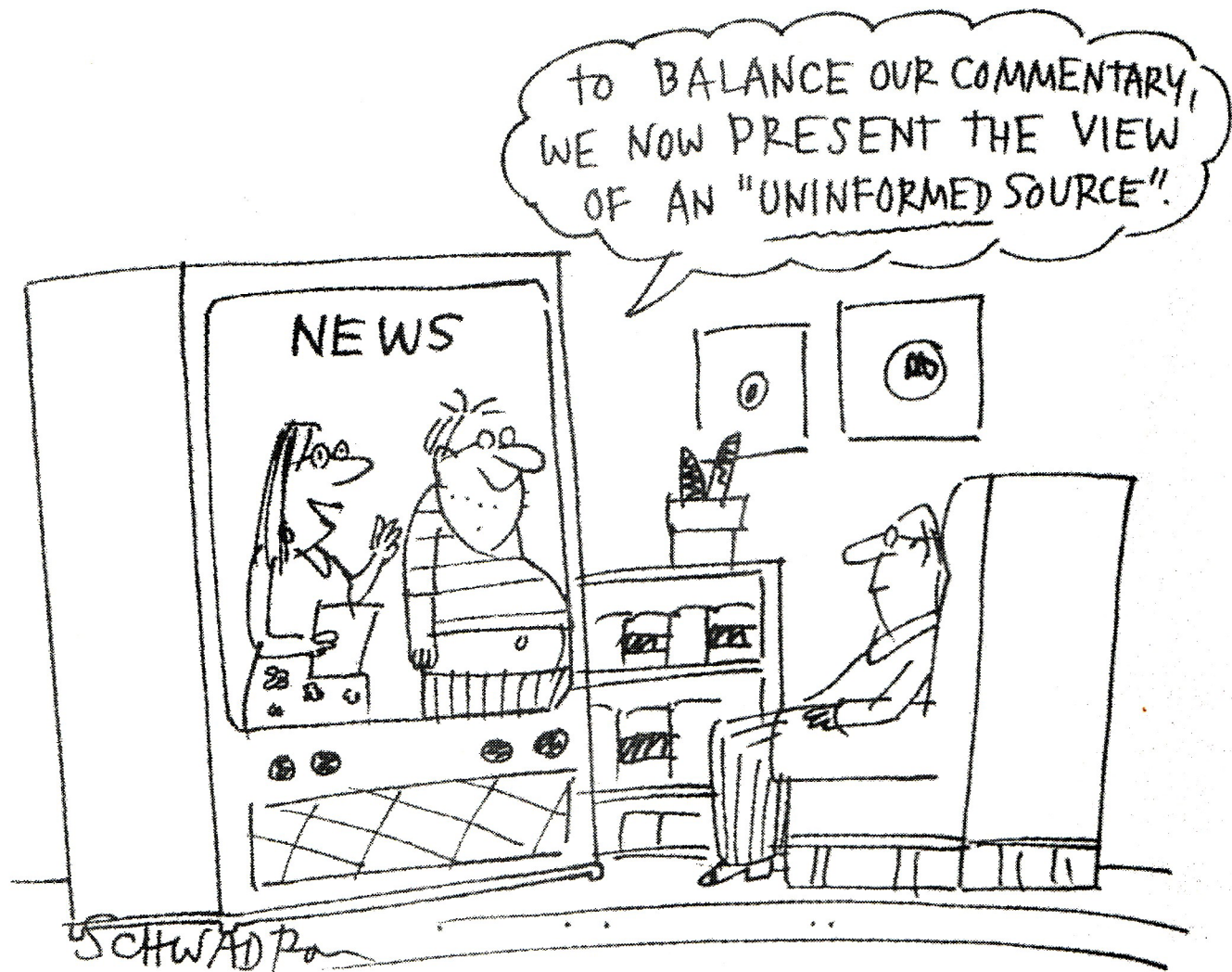




## **Create Partnerships:**

SWSS, Ymir Community Association, Ministry of Sustainable Resource Management, Water, Land and Air Protection; First Nations, Youth, Columbia Kootenay Fisheries Renewal Partnership, Department of Fisheries and Oceans; Ministry of Transportation and Highways; Ministry of Energy and Mines; Watershed Planning Team and Technical Team of the Salmo River Watershed-Based Fish Sustainability Plan, Chamber of Mines, RDCK; Village of Salmo; local industry (Cominco, CPC), other community groups and individuals.













































## **Community Lead?**

- **No real attention was given to a request from SWSS to play a lead/partnering role in YG remediation.**
- **Only reasons why community couldn't participate were given.**
- **None how we could participate!**



## **Partnership Hopes Continue!**

- **“Switch Points” poorly understood relationship erosion points evolved.**
- **Credibility questions.**
- **Sincerity ?**
- **Motivation ?**
- **Process ?**





## **Eliminate “Switch Points”**

- **There were a number of SP's that led to misunderstanding and community frustration.**
- **Sometimes simple, sometimes complex.**
- **Using a community approach to advertise a Gov't. Mtg.**
- **Unwillingness to support a facilitated community Mtg. to give Gov't what they asked for.**
- **Coming to a mtg - privacy was requested.**
- **No att'n to consensus inquiry's prompted by a impromptu KT mtg. ...**



## **Terrible T's**

- **Transparency.**
- **Translation - those guy's spoke in restricted codes.**
- **Timely.**
- **Troops!!**
- **TRUST. Who's interests were being looked after.**





## **What Can We Do?**

- **Change things - Help / teach Gov't. / consultants to dance, synchronize with community.**



# **STREAMLINE**

- **Advocate for a process that incorporates work that has already been accomplished.**
- **Incorporate the ‘DUCK Approach’ - ‘if it walks like a duck, talks like a duck then it’s probably toxic tailings...’**
- **In our case The ‘Inventory’ the WFSP and the Robyn Roome Assessment Report.**





# **STREAMLINE**

**Develop a simple community-based procedures manual that includes:**

- 1. Safety considerations/training.**
  - 2. Site Investigation Techniques.**
  - 3. Community Consultation guide.**
  - 4. Simple sampling procedures.**
  - 5. Remedial options assessment chart.**
- And 6&7&8&9.... To meet needs as identified.**



# **STREAMLINE**

- **Provide training equally to NGO/Gov folk that want it to keep \$ down.**
- **Prioritize training based on 'Hot Spots' and capacity/wants.**
- **Assess practicality for economies of scale...**
- **Provide support!**





# How to be Inclusive

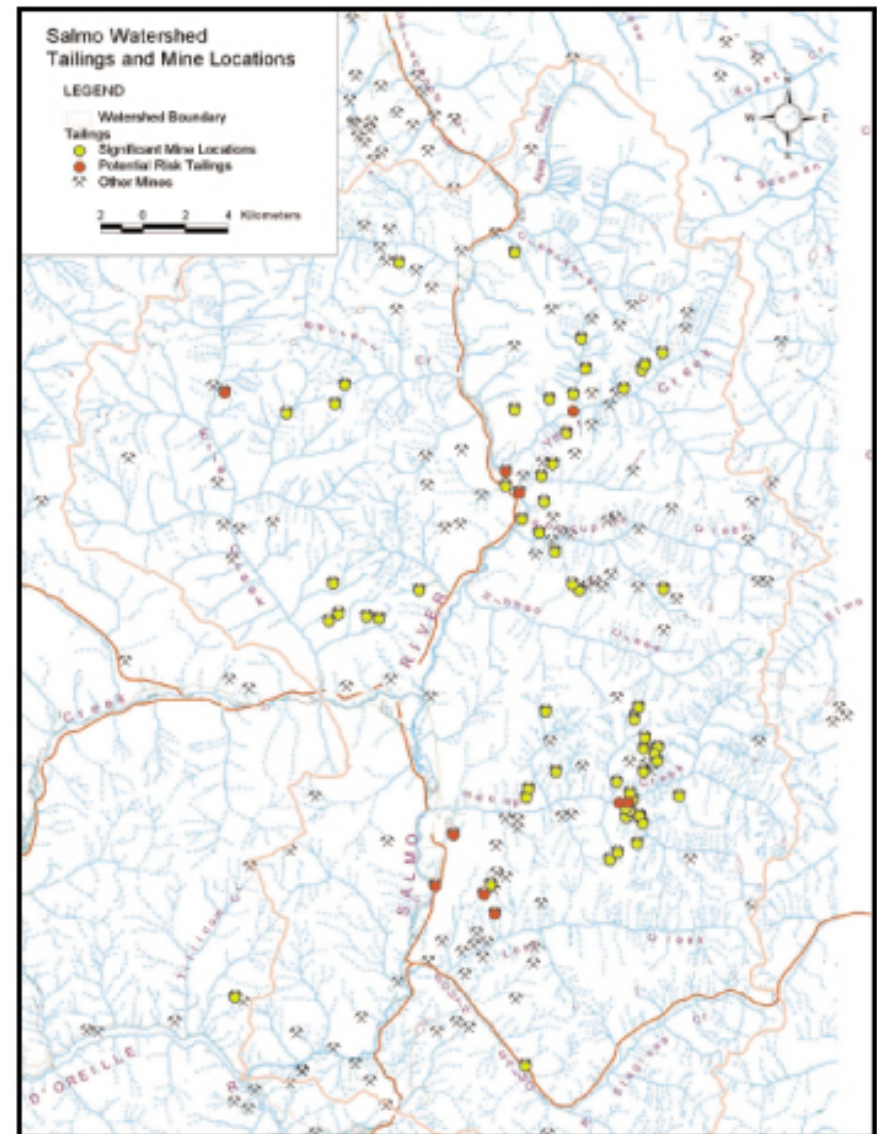
- **Let the lead go where it came from.**
- **Ask for help - take & give guidance.**
- **Support facilitation - don't dominate it.**  
**(the Feb. 07 Mtg.....)**
- **Always take a community-based perspective (the poster issue.....)**
- **Offer considered opportunity based on knowledge.**
- **PARTNER don't dominate.**



# Enviro / Aquatic Ecosystem Health

- Take an area based (watershed) perspective.
- Strategize Big Picture even when shouldered with site specific Orders.
- Look for ways to increase the 'biological bang for the buck' even when dealing with human health issues - they're related!

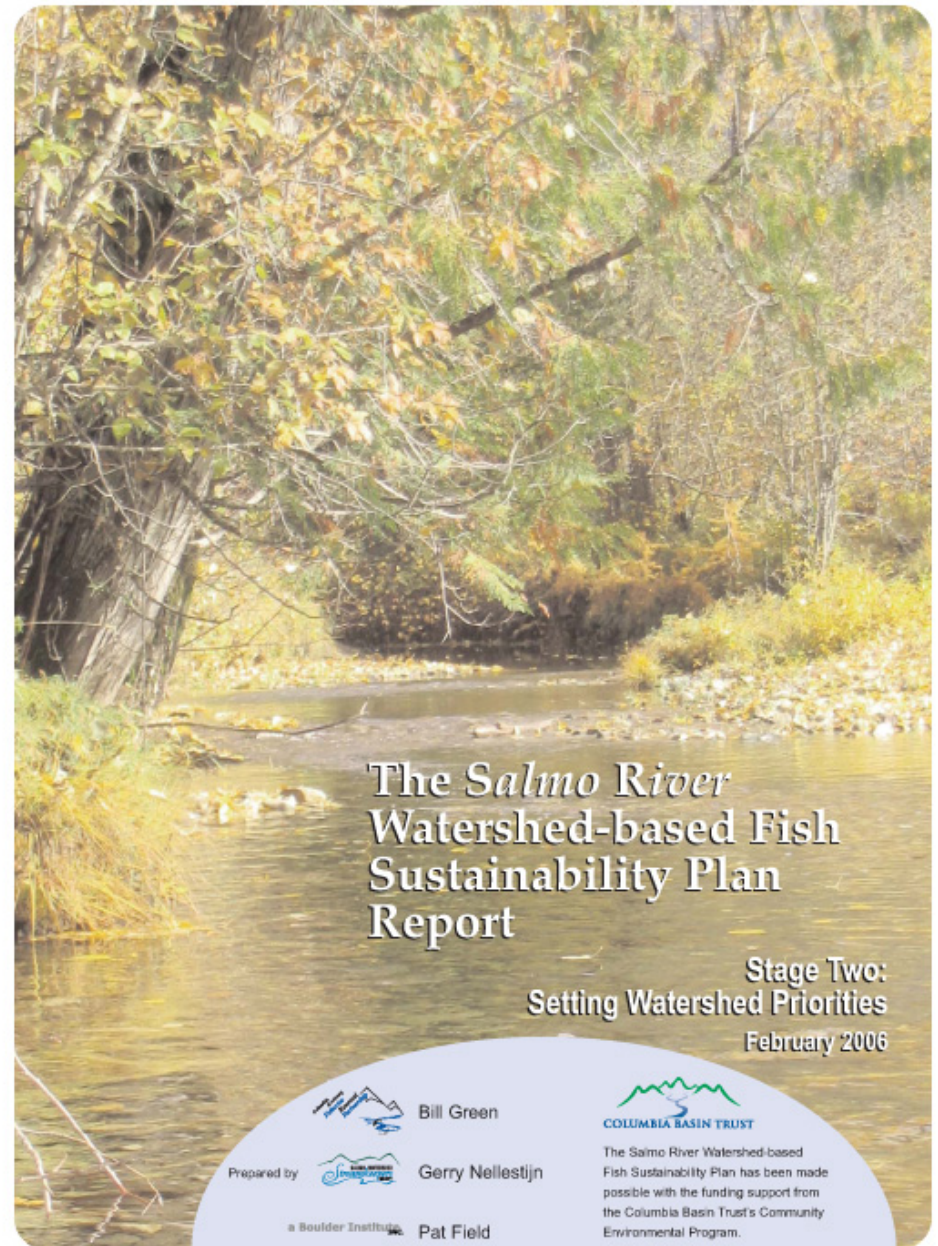
40+ sites identified,  
Yankee Girl priority.





# Environment/ Aquatic Ecosystem Health

- Do not ignore existing documents like the SWSS WFSP, they're the foundation for 'Biological Bang for the Buck'.
- Lead us to getting more for less.  
**Win/Win/Win/Win.**



# Inventory of Mine Tailings and Ponds in the Salmo Watershed



Report researched &  
written by Lisa Heinbach  
November 2000

Edited by Garry Nellstjén



PHOTO:  
Old Yankee Dam  
tailings site on  
the Salmo River  
across from  
Yak, BC.  
This site was last  
used to deposit  
tailings in the  
late 1940's.



- **Realize: The job is too big for GOV'T alone (4000 + sites - The Province June 13/08).**
- **Empower Community: What if we were actually supported?**
- **Use the 'Big Picture'. Question 1 offs.**
- **Drop ego's, learn to share info/knowledge**
- **Shoot for Multiple Win scenarios.**
- **Realize: Community/GOV'T wants the same thing, to rid themselves of CS's.**



# **How Do We Make Things Better, Get More Done?**

**Spend More Money?**

**Pay People More?**

**Get More Specialized?**

**Work on More Gov't (other) Support?**

**Keep Info longer and closer to your chest?**

**Retain Skill sets?**

**Provide Direction not Guidance?**





**Shouldn't We  
Ask  
Ourselves?**



- **Are we just putting our head in the sand by not supporting community?**





## **DEVELOP A PILOT**

- **To engage community as an equal partner.**
- **Develop a review/assessment 'accountability' matrix WITH community to assess benefits, draw backs**
- **Matrix should lead to recommendations for future community/gov't/consultant action**



# **DEVELOP CRITERIA**

## **With COMMUNITY**

- **To assess community capacity**
- **Rank the will of community to participate effectively**
- **To determine administrative capacity**
- **To see if community can partner operationally**
- **Budget effectively.**
- **Understand material needs**
- **To manage, move and shape material into an admirable product**





## **ECOURAGE PROCESSES**

- **That allow community to communicate project phases, outcomes, benefits and drawbacks.**
- **Present community as meaningful partners.**
- **That develop knowledgeable leaders to continue reshaping CS's.**
- **To retain ownership for shaping the 'Place Where We Live'.**



## **What are the BENEFITS**

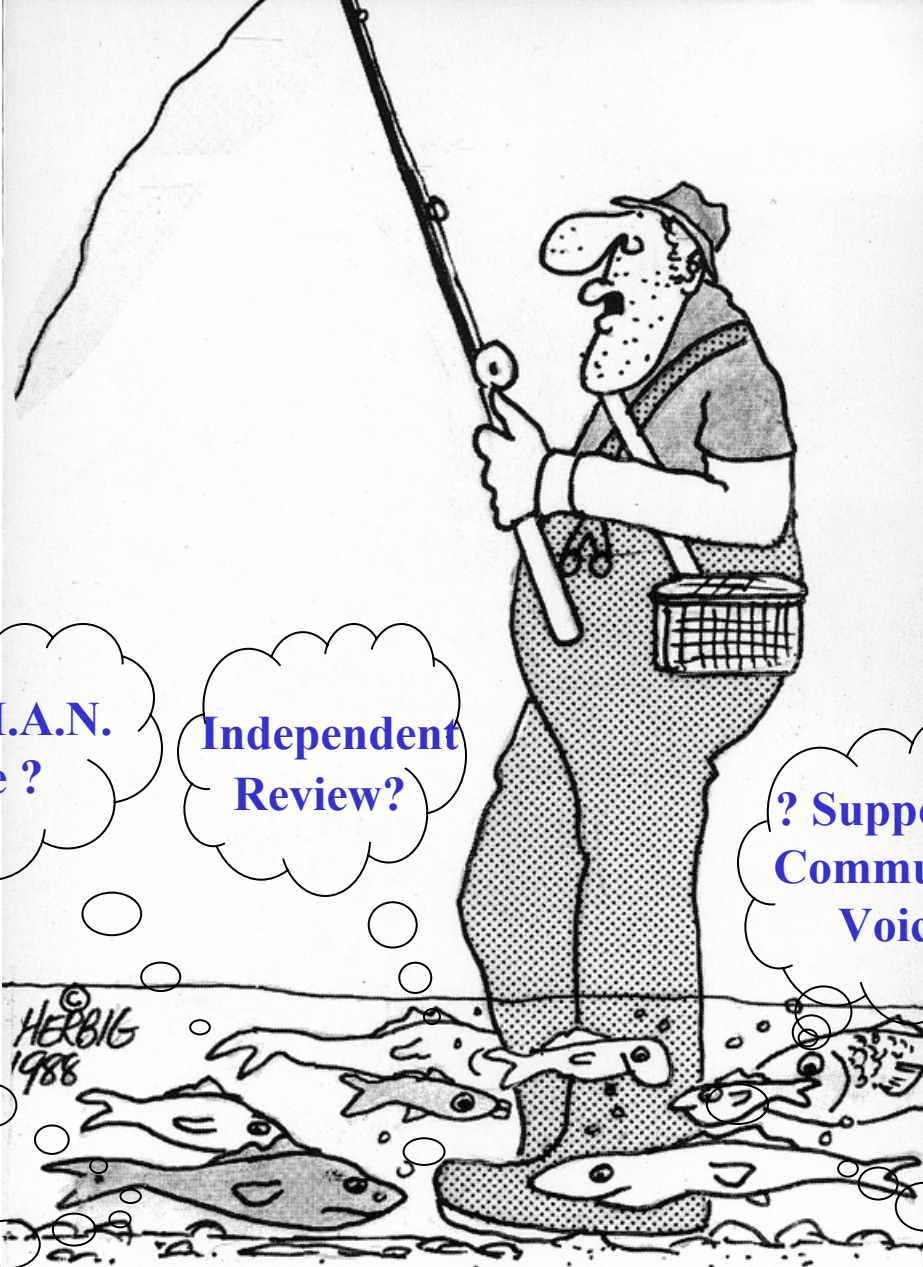
- **You come from a place that looks for what community can accomplish, not what they can't do.**
- **Gov't, Consultants and Community alike reap rewards.**
- **The common good is accelerated - more Contaminated sites get reshaped.**







Now, where would them varmints  
be hangin' out on a day like this?



**Is Bro I.A.N.  
Here ?**

**Independent  
Review?**

**? Support for  
Community  
Voice**

**How 'bout  
Sister L.O. ?**

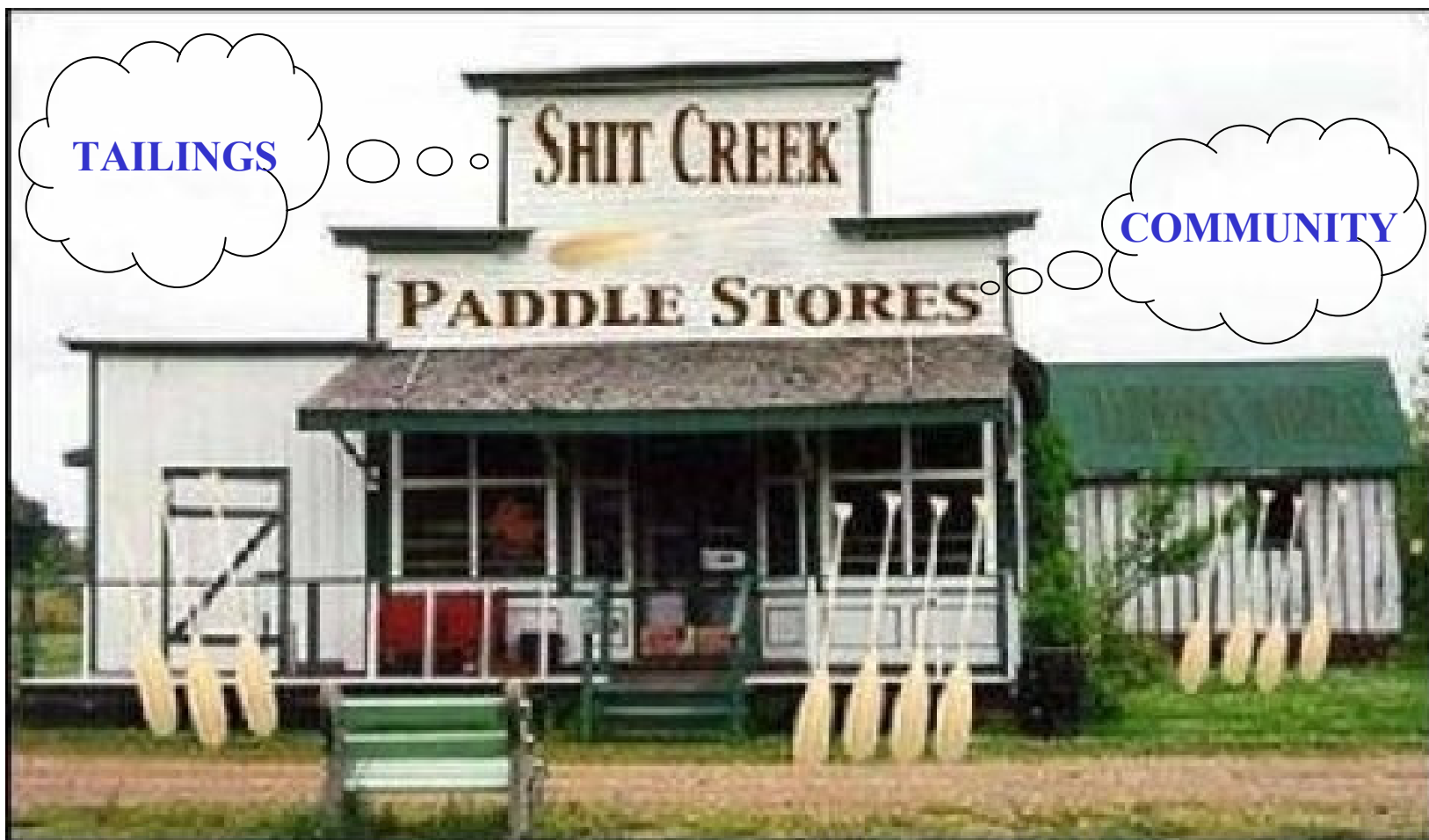
**Timely info  
Sharing?**

**D.A.D. Here?  
(Decide Announce  
Defend)**

**Meaningful  
Community  
Participation?**

*Now, where would them varmints  
be hangin' out on a day like this?*





# TITLE

- Text.

